

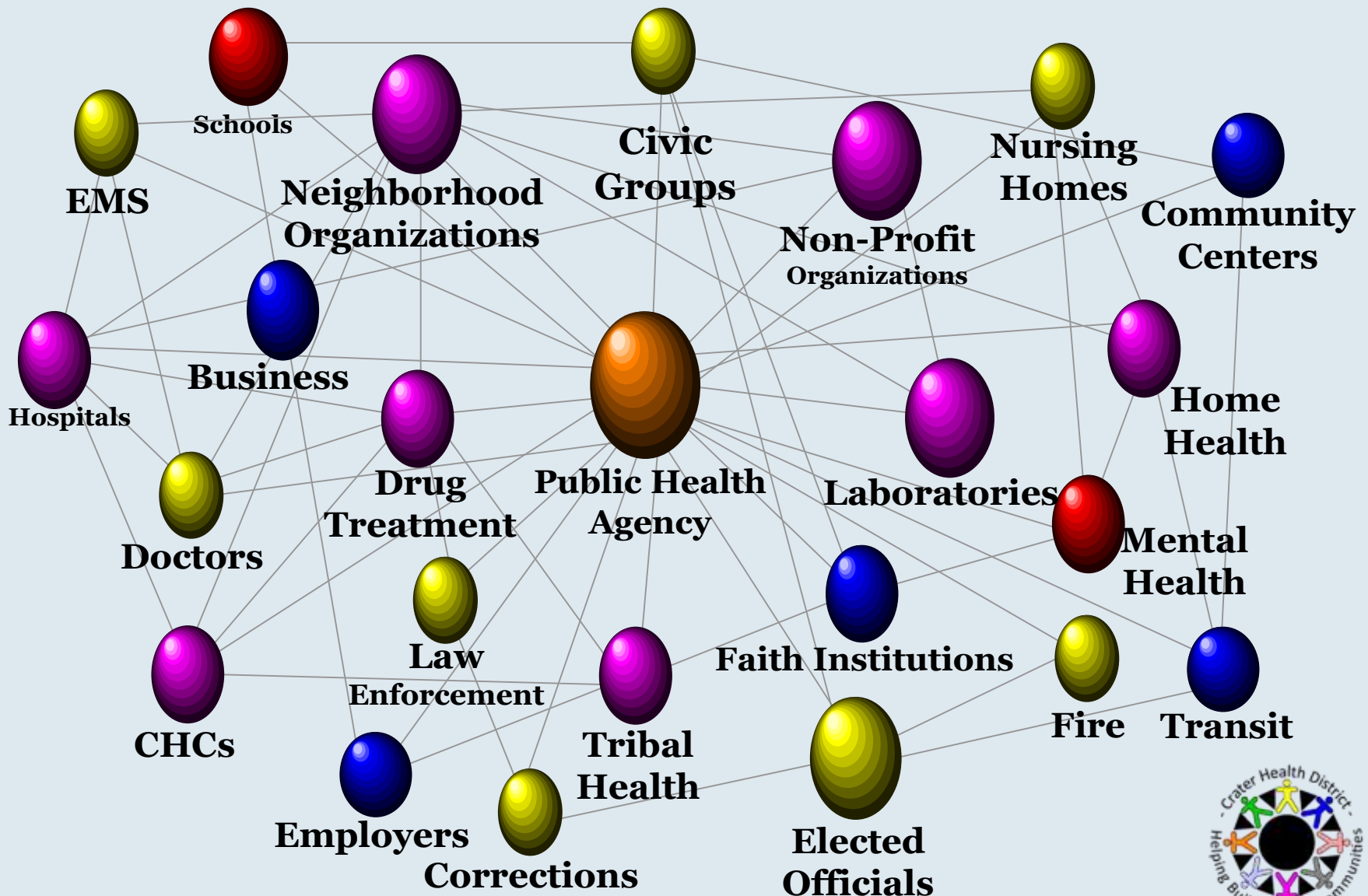
Leadership in Healthcare

Virginia Oral Health Summit
11/2/2017

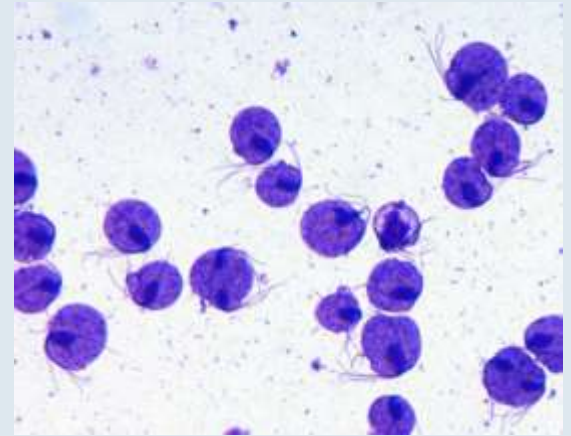
Alton Hart Jr., MD, MPH- Director
Crater District Health Departments



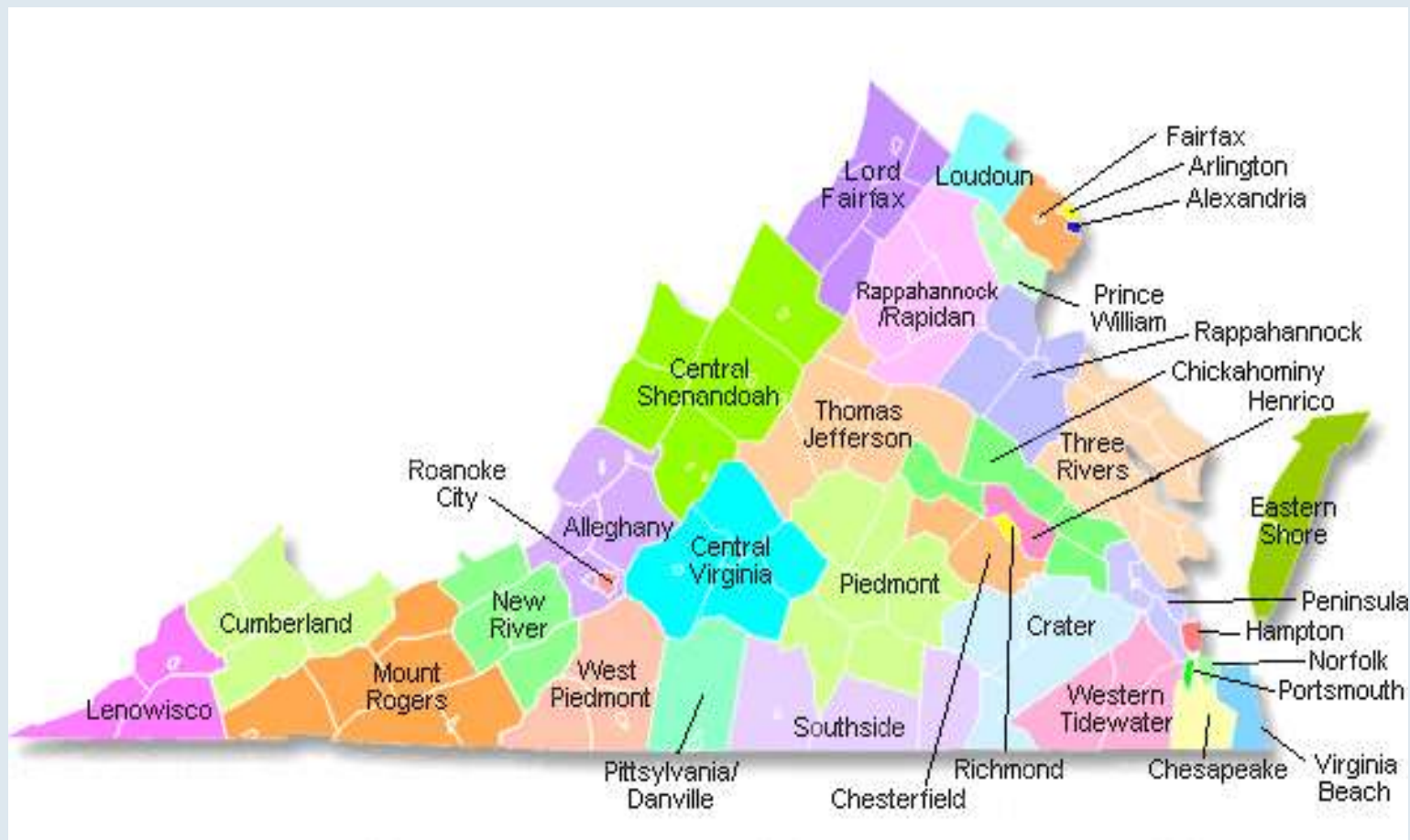
Local Public Health System



Public Health Priorities

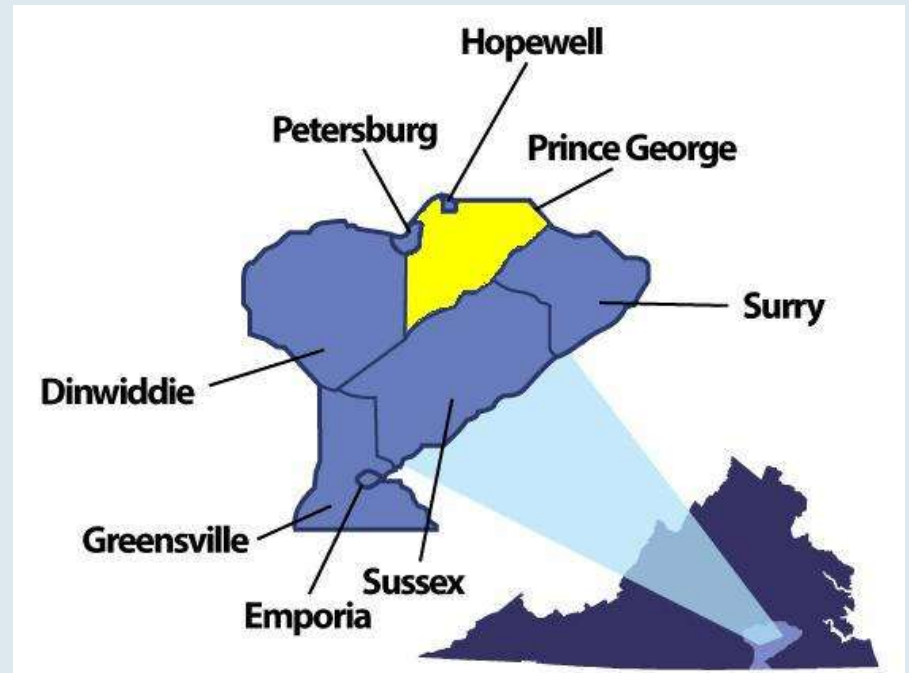


VDH Health Districts



Localities Served

- Petersburg City
- Hopewell City
- Emporia City
- Dinwiddie County
- Greenville County
- Prince George County
- Surry County
- Sussex County



Community Partnerships



Petersburg
Wellness
Consortium



Factors that Affect Health

Smallest
Impact



Largest
Impact



Examples

Eat healthy, be physically active

Rx for high blood pressure, high cholesterol, diabetes

Immunizations, brief intervention, cessation treatment, colonoscopy

Fluoridation, 0g trans fat, iodization, smoke-free laws, tobacco tax

Poverty, education, housing, inequality







Health Disparities

Tooth Decay:



- 47% of third graders tooth decay
- 52% of African American kids



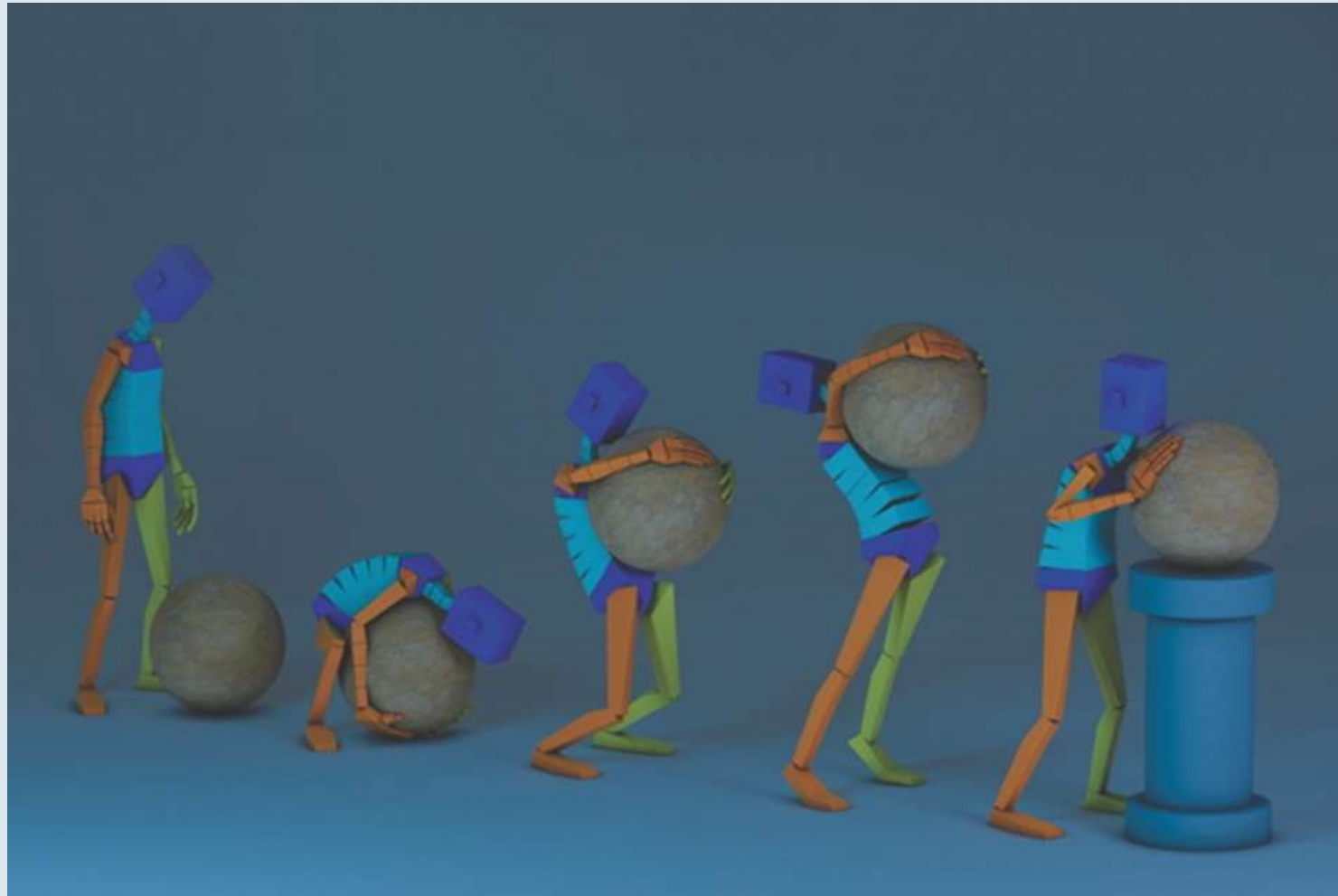
Health Disparities



Virginia: 50% of adults between ages 45-64 lost at least one tooth

- 69% of African Americans
- 74% of adults making less than \$25,000
- 83% of adults with less than a high school education

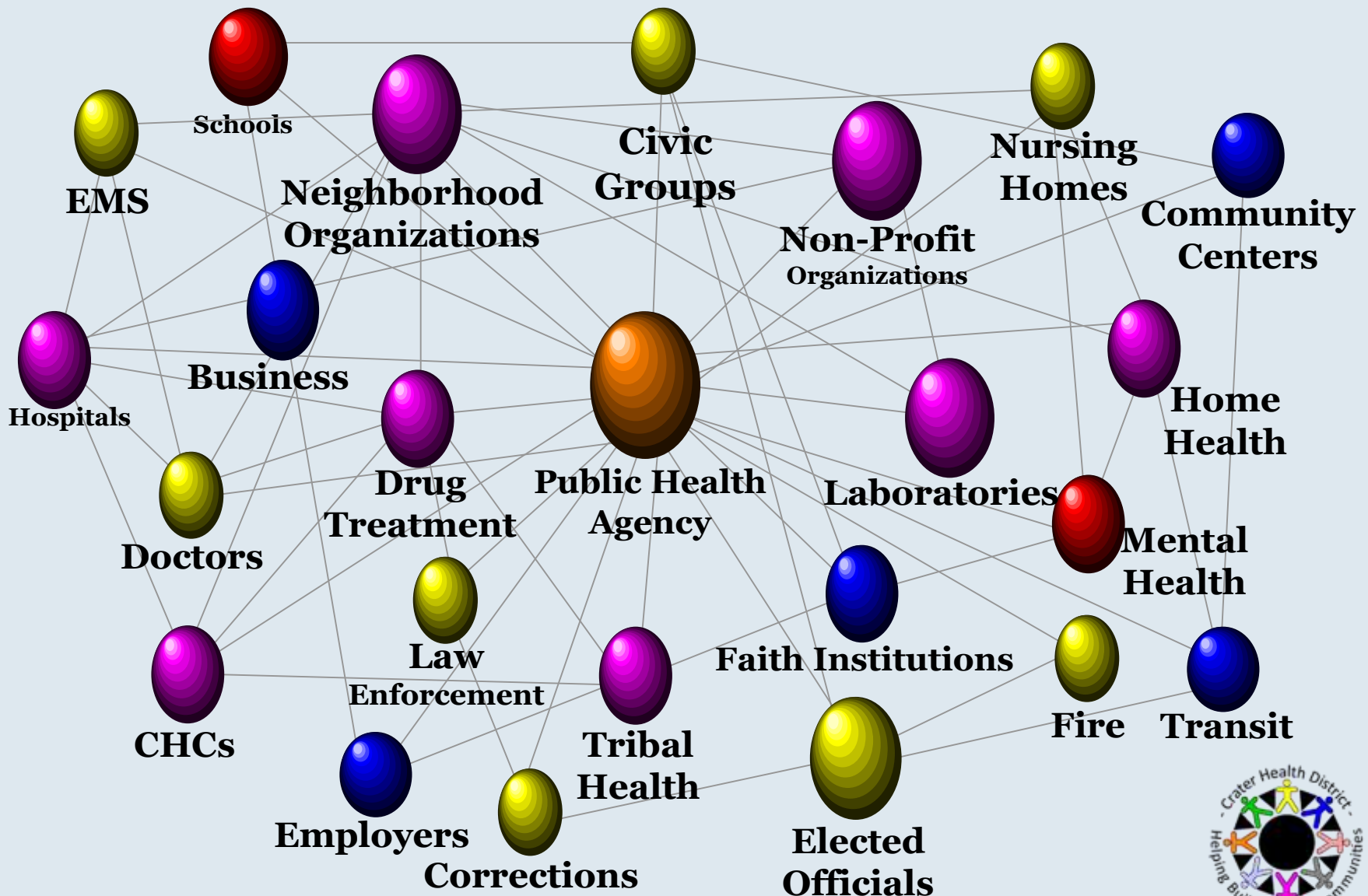




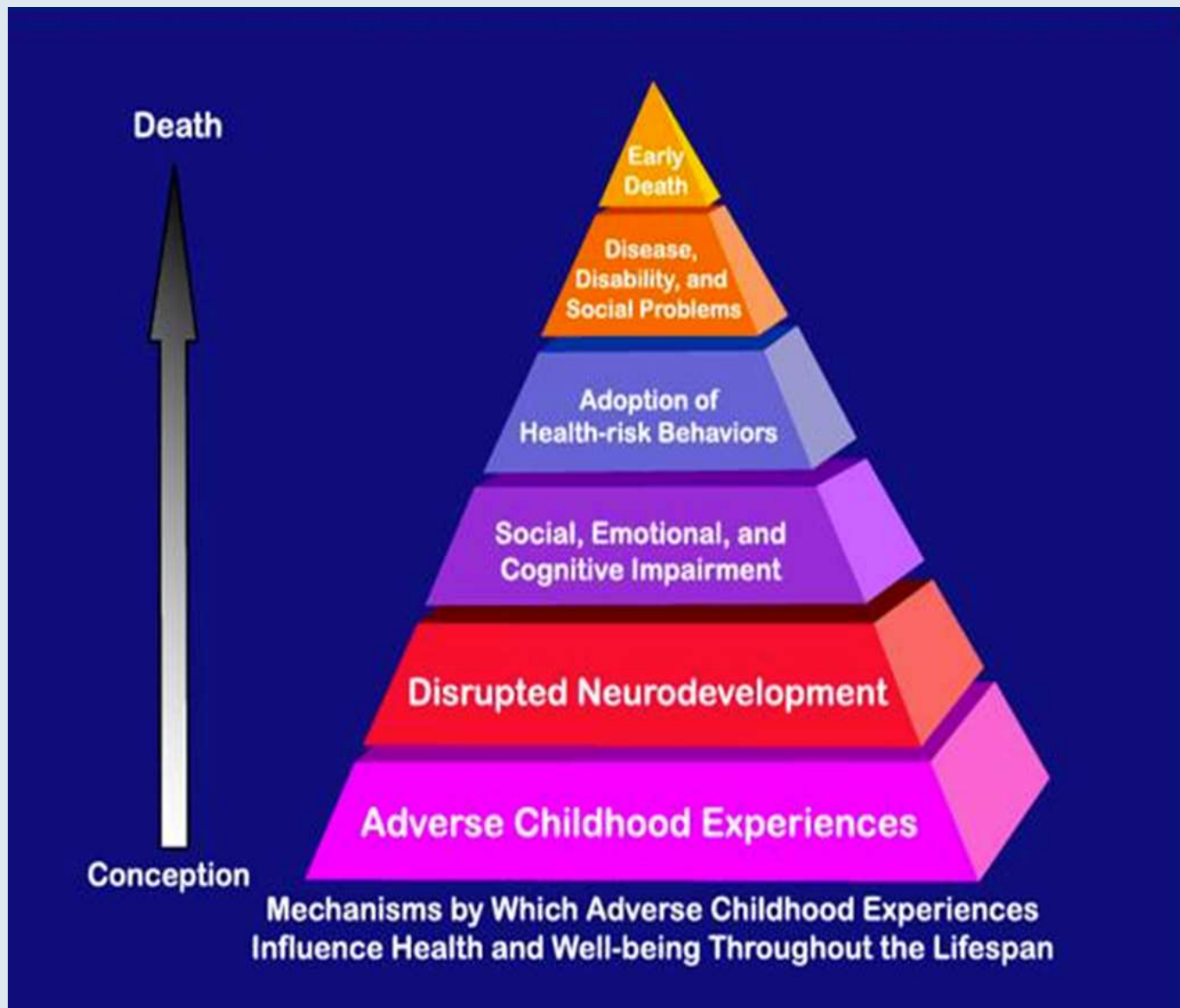
Partnership is Key!



Local Public Health System









Beyond ACEs: Building Community Resilience

Petersburg, VA
June 1-3, 2017



Petersburg
Wellness
Consortium

BEYOND ACES: BUILDING COMMUNITY RESILIENCE

Purpose:

- Educate members of the community about ACEs
- Create a common language within the community about ACEs and Community Level Trauma
- Share tools and resources to address ACEs and build community resilience.
- Share practices and create connections to sustain the community's efforts to build resilience and improve the quality of life for all residents.









